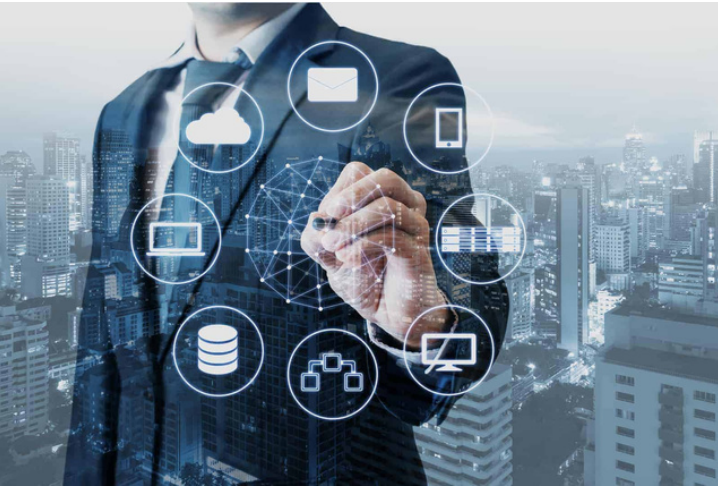


PROJECT WEB ACCESS (PWA)-SAP INTEGRATION



SUCCESS CRITERIA & BUSINESS VALUE

This automated process helped to add any missing, required sequences not included in the project server project plan. It will also manage the existing human process in detecting and communicating any rule violations concerning dates, missing information or schedule changes on already scheduled orders in SAP. In response to the impacts on the existing process of Sequence Implementation, this project was undertaken to automate the existing engineering manual methods currently in place.



BUSINESS OBJECTIVES

Customer is a large manufacturing company and supply chain is one of the most important function of their operation. Customer was using multiple tools such as Microsoft Project Server for maintaining the schedules, SAP for generating the manufacturing orders and sequences, SAP for labor and material forecasting and other Legacy systems for Bill of Materials. Customer was challenged with data inconsistency between these systems due to manual data entry process and human errors resulting major delays in their product delivery.

SOLUTION

Customer wanted to integrate Microsoft Project Server, SAP and Legacy systems bi-directionally in real-time to ensure data consistency, transparency in information exchange and to avoid delays in the product delivery or ensure On time delivery.



CONTACT US

Infometry INC
+1 (510) 770 6400
+1 (510) 793 5859
39111 Paseo Padre Pkwy, Suite 203E,
Fremont, CA 94538, USA

TECHNOLOGIES USED

SAP, Supply Chain Analytics, Microsoft Project Server